

# Pressure Sensor Fluid PSC-260



- ▶ Application: 0 to 260 bar
- ▶ Response time: 2 ms
- ▶ Pressure reference type: Absolut
- ▶ Power supply: 5 V
- ▶ Weight: 35 g

The PSC-260 is specially designed to measure absolute pressure in gasoline direct injection applications. This sensor is also compatible with other kind of fluids e.g. Diesel, engine oil, transmission oil or brake fluid.

The sensor uses a thin layer technique to achieve high accuracy pressure measurements. The stainless steel measuring cells with piezoresistive bridges are hermetically welded with stainless steel pressure ports. The internal reference ensures ambient pressure independent measurements.

The main benefits of this sensor are its high accuracy, its wide measurement range and its robust and compact design.

## Application

Application	0 to 260 bar (a)
Pressure reference type	absolute
Max. pressure	320 bar
Operating temp. range	-40 to 130°C (140°C)
Media temp. range	-40 to 130°C (140°C)
Storage temp. range	-30 to 60°C
Max. vibration	560 m/s <sup>2</sup> at 800 to 900 Hz 350 m/s <sup>2</sup> at 1.000 to 2.500 Hz

## Technical Specifications

### Mechanical Data

Male thread	M10 x 1
Wrench size	27 mm
Installation torque	22 ± 2 Nm in aluminum 32.5 ± 2.5 Nm in steel

Weight w/o wire	35.2 g
Sealing	sealed cone

### Electrical Data

Power supply $U_s$	4.75 to 5.25 V
Max power supply $U_s$ max	16 V
Full scale output $U_A$	10 to 90 % $U_s$ ratio metric
Current $I_s$	12 mA

### Characteristic

Load capacity	10 nF
Output resistance	10 Ohm
Tolerance (FS)	+ 1 % (0 to 100°C) + 1.5 % (-40 to 0°C and 100 to 130°C)
Sensitivity	15.38 mV/bar at $U_s = 5$ V
Offset	500 mV at $U_s = 5$ V

### Connectors and Wires

Connector	ASL606-05PC-HE
Mating connector	F02U.000.228-01
ASL006-05SC-HE	
Pin 1	-
Pin 2	Gnd
Pin 3	Sig
Pin 4	$U_s$
Pin 5	-
Various motorsport and automotive connectors are available on request.	
Please specify the required wire length with your order.	
Sleeve	DR-25

Wire length L	13 to 95 cm
---------------	-------------

### Installation Notes

- The PSC-260 can be connected directly to most control units. Please consider the TCI for the electrical connection of the sensor.
- The sensor has a protection for overvoltage, reverse polarity and short-circuit.
- Please do not fix the sensor directly to the engine block to avoid undesired strong vibrations.
- Each mounting orientation is possible.
- Please consider using the adapter F02U.002.711-01.
- The sensor meets all EMV, EMC and ESD automotive standards.
- Please find further application hints in the offer drawing and free download of the sensor configuration file (\*.sdf) for the Bosch Data Logging System at our homepage.

### Safety Note

The sensor is not intended to be used for safety related applications without appropriate measures for signal validation in the application system.

### Legal Restrictions

Due to embargo restrictions, sale of this product in Russia, Belarus, Iran, Syria, and North Korea is prohibited.

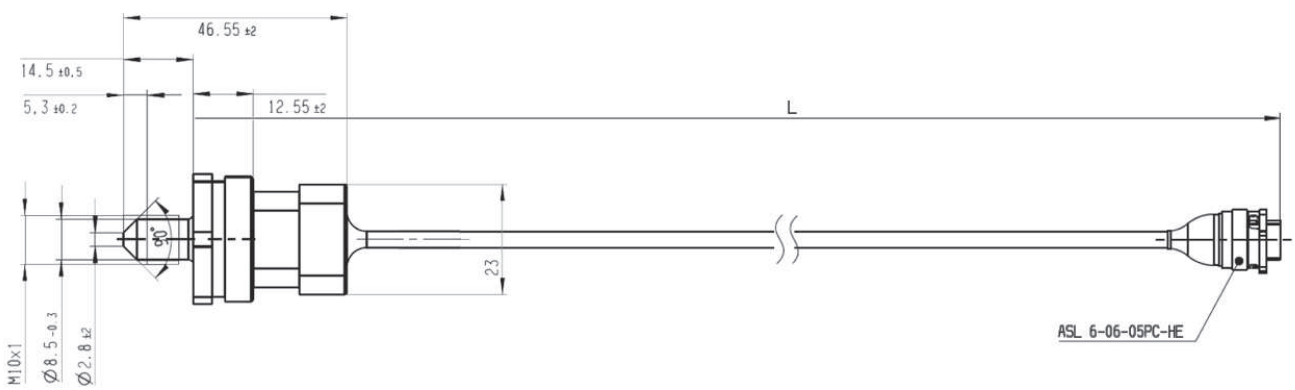
### Ordering Information

**Pressure Sensor Fluid PSC-260**  
Order number **F02U.V00.990-03**

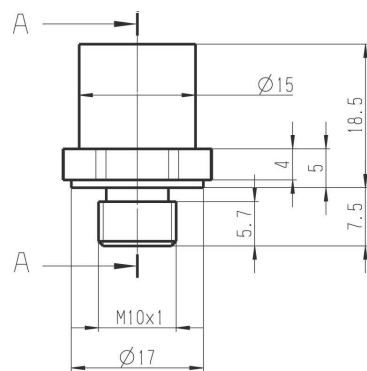
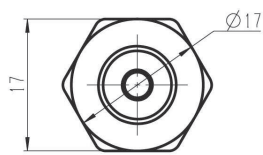
### Accessories

**Adapter**  
Order number **F02U.002.711-01**

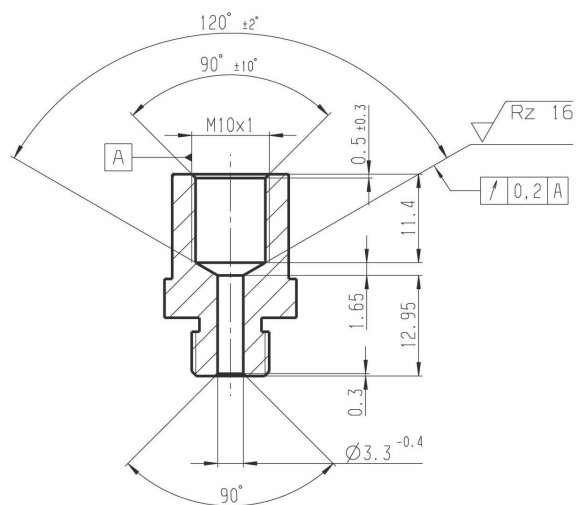
### Dimensions



Sensor



Adapter



**Represented by:**

**Europe:**

Bosch Engineering GmbH  
Motorsport  
Robert-Bosch-Allee 1  
74232 Abstatt  
Germany  
Tel.: +49 7062 911 9101  
Fax: +49 7062 911 79104  
motorsport@bosch.com  
www.bosch-motorsport.de

**North America:**

Bosch Engineering North America  
Motorsport  
38000 Hills Tech Drive  
Farmington Hills, MI 48331-3417  
United States of America  
Tel.: +1 248 876 2977  
Fax: +1 248 876 7373  
motorsport@bosch.com  
www.bosch-motorsport.com

**Asia-Pacific:**

Bosch Engineering Japan K.K.  
Motorsports Department  
1-9-32 Nakagawa Chuo, Tsuzuki-ku  
Yokohama City  
Kanagawa Prefecture 224-8601  
Japan  
Tel.: +81 45 605 3032  
Fax: +81 45 605 3059  
www.bosch-motorsport.jp

**Australia, New Zealand and South**

**Africa:**  
Robert Bosch Pty. Ltd  
Motorsport  
1555 Centre Road  
Clayton, Victoria, 3168  
Australia  
Tel.: +61 (3) 9541 3901  
motor.sport@au.bosch.com